

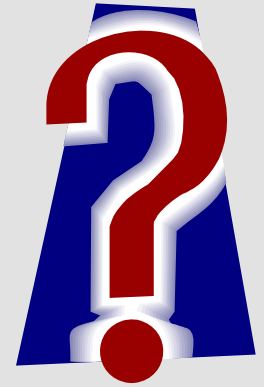
DUAL ENROLLMENT

Information
And
Procedures





WHAT IS THE DUAL ENROLLMENT PROGRAM



The Dual Enrollment Program is an opportunity for qualified high school students to earn college credits. The student is “jointly” enrolled in high school and in college.

He/she earns college credits as well as high school credits needed for graduation.

DUAL ENROLLMENT



ACCEL

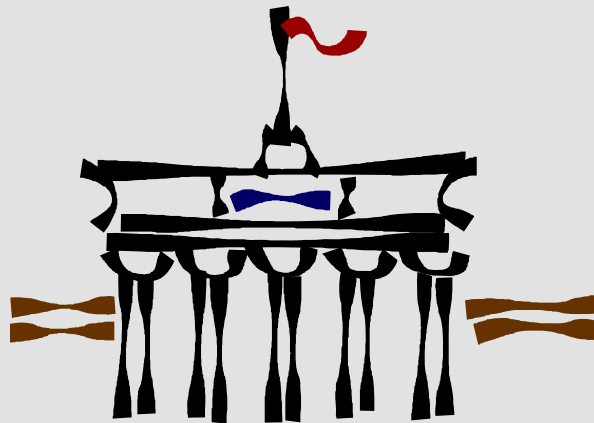
MOVE ON WHEN
READY (MOWR)

(Part-Time)

(Full-Time)

WHERE CAN I ATTEND?

A student may attend any public college, private college, or technical college.



WHAT IS THE COST?



- ▶ The ACCEL Program is funded with HOPE Scholarship funds.
- ▶ MOWR is funded by the local school system.
- ▶ Students attending public colleges receive tuition, and approved fees.
- ▶ Students attending private colleges receive up to \$3500 per academic year for full-time enrollment (or a pro-rated amount for less than full-time attendance).
- ▶ The credit hours for which a student receives payment from the ACCEL Program will be subtracted from the maximum total number of credit hours (127 semester/190 quarter) funded by the HOPE Scholarship Program.
- ▶ The ACCEL Program funds only academic classes (LA, Math, SS, SC, and FL).
- ▶ The MOWR Program funds academic classes and approved electives.

WHAT ABOUT TRANSFER CREDIT?

- ▶ It is the student's responsibility to talk with colleges regarding their policies on Dual Enrollment credit. Generally, public colleges in the state of Georgia will honor any credit earned at any other Georgia public college when a grade of "C" or better is earned.
- ▶ Private colleges and out of state colleges vary on their acceptance of dual enrollment credit.

HOW DOES GRADING WORK?

- ✓ If colleges provide the high school with letter grades, the high school will transcribe the letter grade to the midpoint of the grading scale.
A = 95 B = 85 C = 77
D = 72 F = 50
- ✓ If an End of Course Test (EOCT) is required for a course taken at college (Ex. Economics), the student must return to the high school and complete that test. The EOCT counts 15% of the student's final H.S. grade.
- ✓ If the student fails a class, it could jeopardize graduation!
- ✓ No points are added to the final grade.
- ✓ All Dual Enrollment classes are included on the transcript.



FULL-TIME OR PART-TIME?

WHICH IS BETTER FOR ME?

- ▶ A student may choose to attend a college full-time or part-time.

MOWR

Full-Time

Four or five 3 hour classes

ACCEL

Part-Time

Students must be enrolled in courses equal to 2.5 High School credits to participate in extra curricular activities.

WHAT ARE THE DIFFERENCES?

ACCEL

- Part-time college
- Academic classes only
- Small book allowance
- HOPE pays
- Can drop classes
- Electronic Application

MOWR

- Full-time college – 12 hr. minimum
- Academic & approved elective classes
- No book allowance
- Local High School pays
- Cannot drop classes or switch to ACCEL
- Paper Application

* Note: ACCEL and MOWR will only be permitted to return to full-time High School classes at the beginning of a semester.

GRADE CONVERSION

- ▶ 1 - 2 semester hour college classes = .5 HS credit.
- ▶ 3 - 5 semester hour college classes = 1.0 HS credit.
- ▶ 1 - 3 quarter hour college classes = .5 HS credit.
- ▶ 4 - 8 quarter hour college classes = 1.0 HS credit.

Be aware – If students complete High School graduation requirements early, they will no longer be able to participate in Dual Enrollment or attend High School.

WHAT ARE THE PROS AND CONS?

PROS

- You get a head start on college.

CONS

- It takes students away from the home school which can make it difficult to keep up with important Junior and Senior information.
- Many colleges prefer a different curriculum path (i.e. AP classes).

BE AWARE!!!

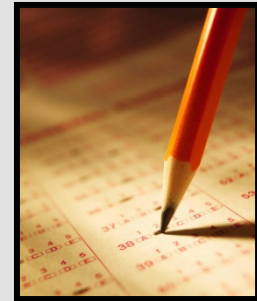
- ✓ A student must meet the requirements of the college he/she plans to attend!
- ✓ It is the student's responsibility to register for the correct classes.
- ✓ The student is responsible for ALL interaction with the college. The college will not speak with a parent or the High School Coordinator regarding the student.
- ✓ Be sure to have all schedule changes approved by the High School Coordinator.
- ✓ Holidays such as Spring Break will be different from the Gwinnett County holidays.
- ✓ A student must be registered in at least 2.5 credits of course work to participate in extracurricular activities.

REQUIREMENTS TO PARTICIPATE

- ▶ The student must be a US citizen or Permanent Resident Alien.
- ▶ The student must meet the federal selective service registration requirements.
- ▶ The student must apply to the college of choice and meet the entrance requirements.
- ▶ The student must obtain written permission from the high school Dual Enrollment coordinator to participate in the program (to be sent in with the transcript.)
- ▶ The student and parent must attend an advisement session.
- ▶ After being accepted to a college, the student must complete the ACCEL (electronic) or MOWR (paper) application.
- ▶ MOWR students must have been enrolled in their current school during October and March of the previous year.

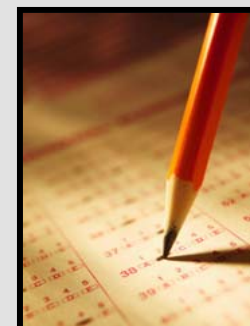
DUAL ENROLLMENT

REQUIREMENTS FOR GEORGIA PERIMETER COLLEGE



- ▶ Submit application and all supporting information to Georgia Perimeter
- ▶ GPA requirement – 3.0 core gpa
- ▶ SAT minimum scores – Critical Reading 530/
Math 440
- ▶ ACT minimum scores – English 23/Math 18/
Composite 20
- ▶ 530 SAT or 22 ACT Math score is required for students taking fourth year of Math
- ▶ Application Deadline – July 1, 2010
- ▶ CAUTION: No Gwinnett Location

DUAL ENROLLMENT REQUIREMENTS FOR GAINESVILLE COLLEGE



- ▶ Submit application and all supporting information to Gainesville College
- ▶ GPA requirement – 3.0 core gpa
- ▶ SAT minimum scores – Critical Reading 480/
Math 460
- ▶ ACT minimum scores – English 20/Math 19
- ▶ If taking 4th year of LA and Math – 530 V,
530 M (SAT) or 23 E, 22 M (ACT)
- ▶ Application Deadline – July 1, 2010

DUAL ENROLLMENT

Requirements for Middle Georgia College – GAMES (Georgia Academy of Aviation, Math, Engineering and Science)

- ▶ Submit Application and all supporting information to Middle Georgia College.
- ▶ GPA Requirement – 3.5 Core GPA
- ▶ SAT Minimum – Math 560/Critical Reading 530
- ▶ ACT Minimum – Math 24, English 23, Composite 24
- ▶ Application Deadline – July 1, 2010

DUAL ENROLLMENT
REQUIREMENTS FOR WEST
GEORGIA COLLEGE –
ADVANCED ACADEMY

- ▶ Submit Application and all supporting information to West Georgia College.
- ▶ GPA Requirement – 3.5 Core GPA
- ▶ SAT Minimum – Math 530/Critical Reading 580
Composite 1150
- ▶ ACT Minimum – Math 22, English 25, Composite 25
- ▶ Application Deadline – July 1, 2010

GEORGIA GWINNETT COLLEGE

- ▶ Submit Application and all supporting information to Georgia Gwinnett College.
- ▶ GPA Requirement – 3.0 Core GPA
- ▶ SAT Minimum – Math 460/Critical Reading 480
Composite 970 (CR+M)
- ▶ ACT Minimum – Math 19, English 21, Composite 20
- ▶ Application Deadline – July 1, 2010

DUAL ENROLLMENT PROGRAM POLICIES AND PROCEDURES

The following steps should be followed if you are planning to participate in the Dual Enrollment Program:

- ___1. Attend a Parent/Student Information Meeting.
- ___2. Complete the Advisement/Contact Information Form.
- ___3. Complete the School Permission Form. This form must accompany the student's transcript.
- ___4. Apply to and be accepted by the college/university of your choice.

PROCEDURES CONT.

- ___5. After receiving your acceptance from the college/university, contact your High School's Coordinator.
- ___6. Meet with your High School Coordinator and complete the Senior Application for Graduation.
- ___7. Complete ACCEL or MOWR application.
- ___8. Meet with your college advisor and select classes. Obtain a copy of your college schedule.

PROCEDURES CONT.

- ___9. Provide your High School Coordinator with a copy of your college schedule.
- ___10. Verify if an EOCT is required for any college course you are taking and report to the high school at the designated time to take the exam(s).
- ___11. At the end of the semester, provide a copy of your college/university grades to your High School Coordinator.
- ___12. Repeat steps 7 - 11 for second semester.